



Advancing effective and just ocean governance

20 Sept 2024

David Gill,
Duke University



Oceans are a valued space



Unprecedented global
ocean change

Unprecedented Global Change

Impacts on coastal communities & ecosystems



5000 BIELKOW/HFP/GETTY IMAGES

(Wiki commons)

Unprecedented Global Change

Ocean Climate, Conservation & Development Policies



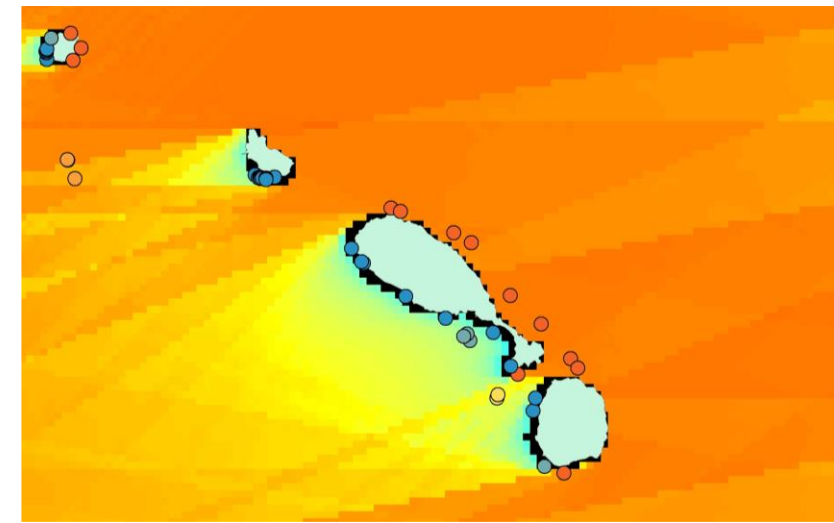
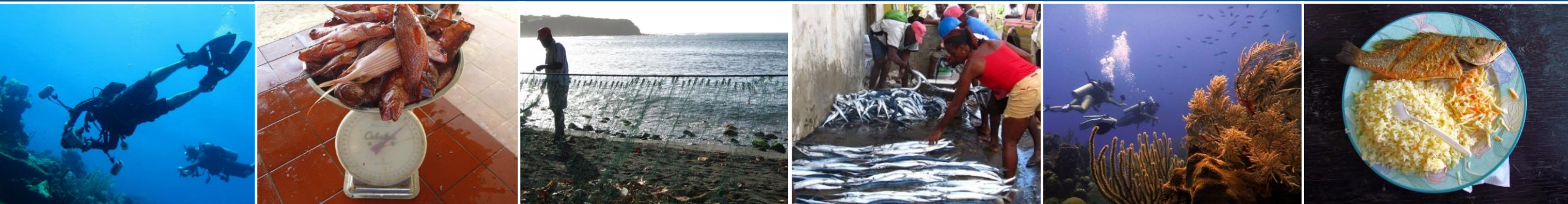
SUSTAINABLE DEVELOPMENT GOALS
17 GOALS TO TRANSFORM OUR WORLD

1 NO POVERTY 	2 ZERO HUNGER 	3 GOOD HEALTH AND WELL-BEING 	4 QUALITY EDUCATION 	5 GENDER EQUALITY 	6 CLEAN WATER AND SANITATION
7 AFFORDABLE AND CLEAN ENERGY 	8 DECENT WORK AND ECONOMIC GROWTH 	9 INDUSTRY, INNOVATION AND INFRASTRUCTURE 	10 REDUCED INEQUALITIES 	11 SUSTAINABLE CITIES AND COMMUNITIES 	12 RESPONSIBLE CONSUMPTION AND PRODUCTION
13 CLIMATE ACTION 	14 LIFE BELOW WATER 	15 LIFE ON LAND 	16 PEACE, JUSTICE AND STRONG INSTITUTIONS 	17 PARTNERSHIPS FOR THE GOALS 	SUSTAINABLE DEVELOPMENT GOALS

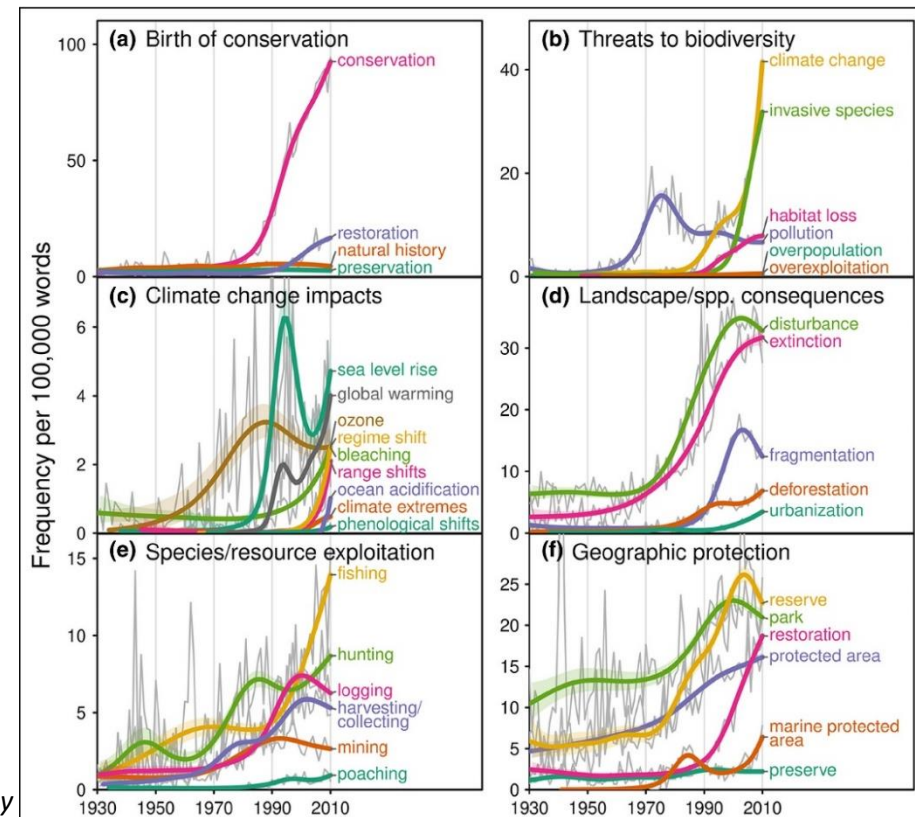


Unprecedented Global Change

Exponential increase in social and natural science research



NASA



Anderson et al 2021 *Ecology*

Equity and Justice implications



Jeff Tan Photography via 350 Pacific



Jennifer Gauthier

Ocean Synthesis Research Lab

Social-ecological systems approach to understand causal factors shaping effectiveness and equity of coastal policies & change

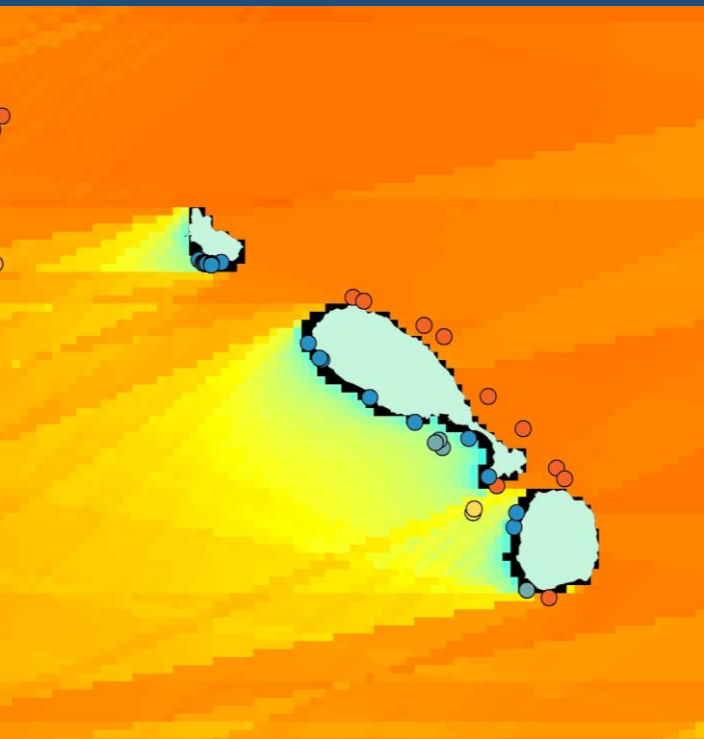
Synthesis: bringing together people, disciplines, data, literature to generate novel insights

Developing evidence-based insights for **solutions** to sustainability challenges

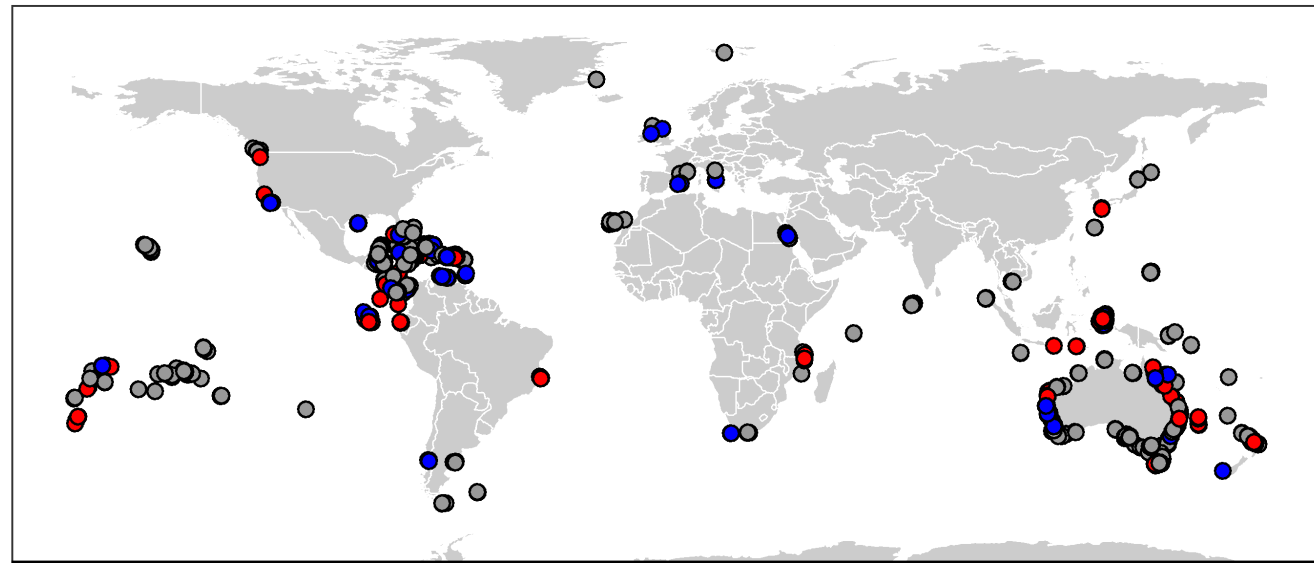


Factors Shaping Conservation Effectiveness & Equity

Role of context & governance in shaping outcomes

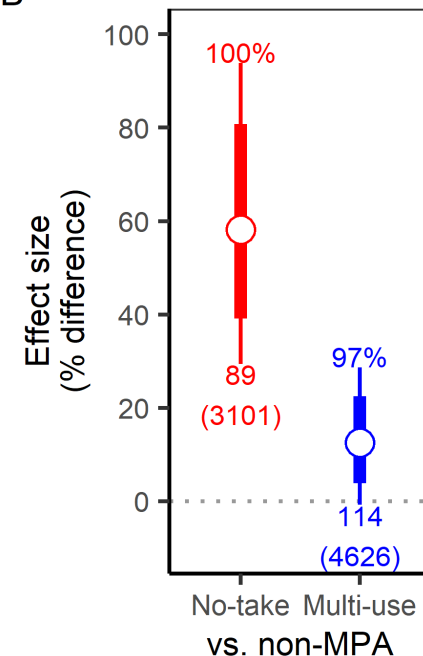


Gill et al 2024 PNAS



Site type ● No-take (NT) ● Multi-use (MU) ● Non-MPA

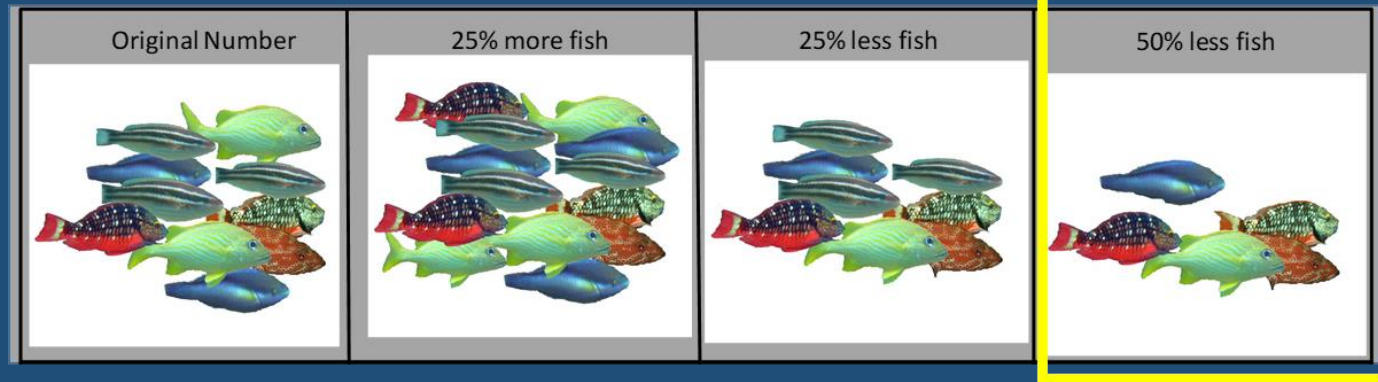
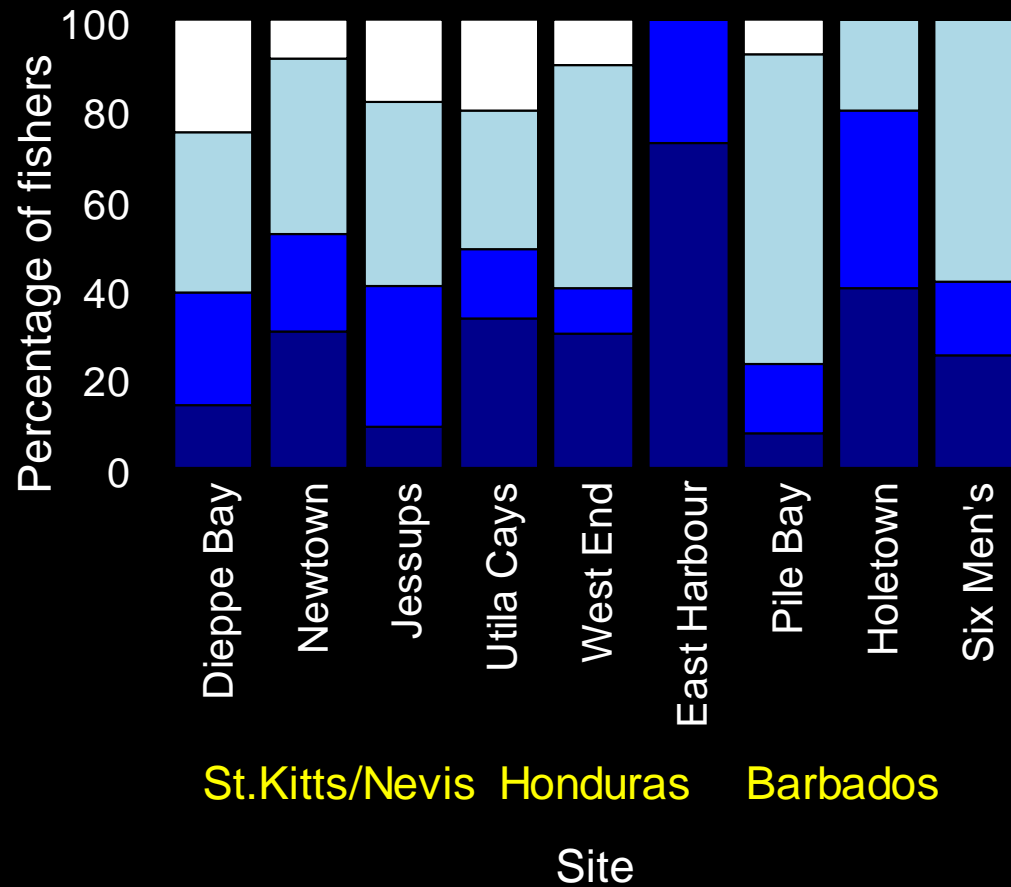
B



Social-Ecological Impacts of Environmental Change

How resource dependent communities respond to change

50% less fish



Blue Justice initiative:

Advancing equity & resilience at the climate, development, & conservation nexus



Who we are: Global team of researchers and practitioners working in the climate, development, & conservation nexus



What we do: Produce original and solution-oriented research & guidance for more equitable implementation of coastal initiatives



Where we focus: Climate, development, & conservation initiatives in coastal communities in less-economically developed regions (LDCs)



How we do it:

- Work in partnership (INGOs, local experts)
- Capacity development (LDCs, INGOs)
- Challenge & persuade using evidence

Contextual Conditions & Development Aid in Blue Economy

Coastal context with greatest risks, greatest opportunities on equity & vulnerability

Provide implementers and funders with a global risk map highlighting areas where equity in coastal initiatives is critical due to potential interactions between externally-funded initiatives & “contextual inequity” (high social-ecological vulnerability & pre-existing inequality)



Ocean Equity Index

Cross-Sectoral Equity Assessment Tool for Ocean Initiatives

Tool to support assess equity within ocean policies, projects, and much more

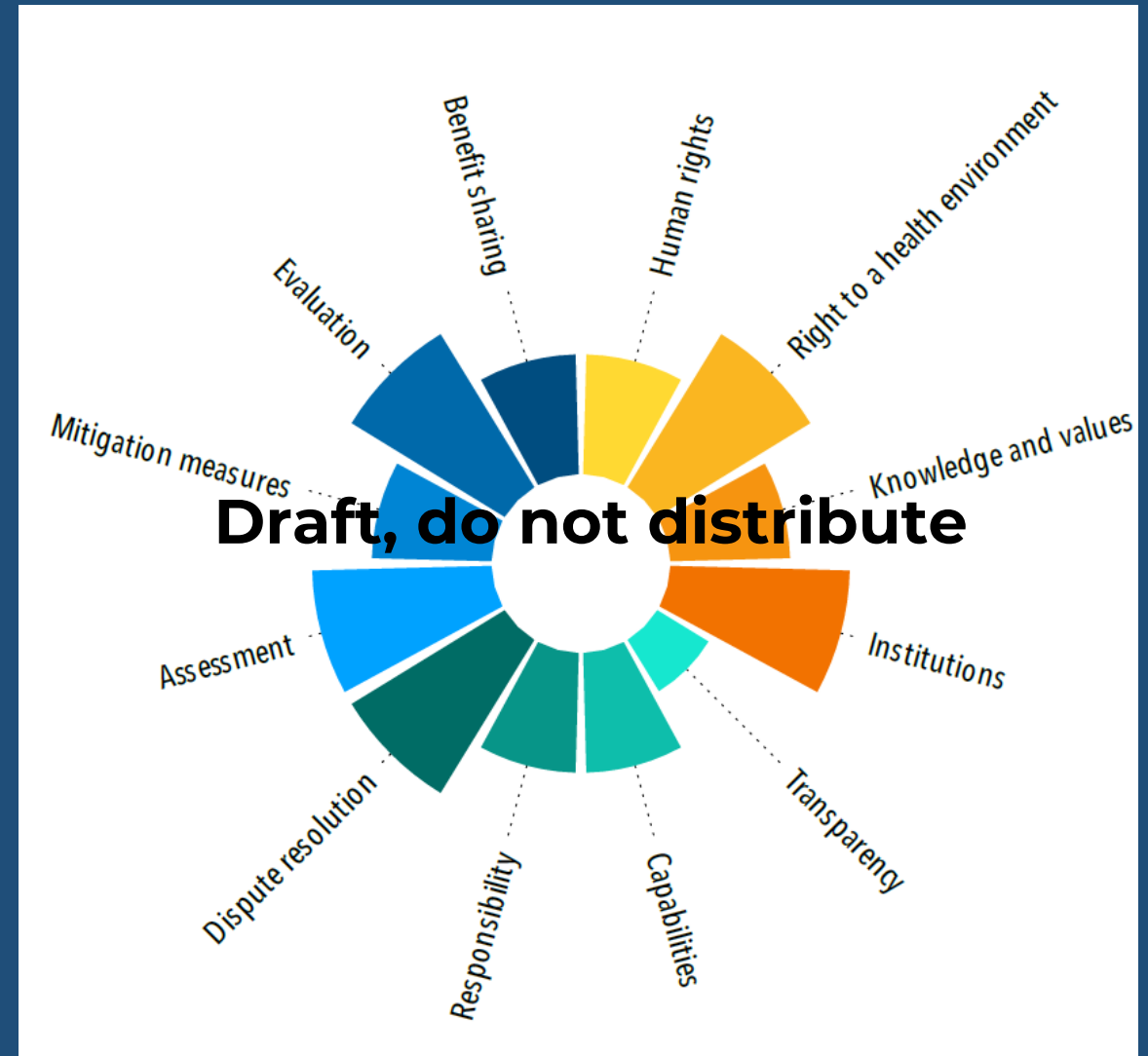
Multi-dimensional index

Works across scales & sectors (e.g. market-chain, blue carbon)

Can be used by funders, implementors, external evaluators, private sector & more

Applicable for:

- Self-assessments & reporting
- Project screening & evaluation
- Project design
- Certification standards
- Social safeguards
- Public awareness



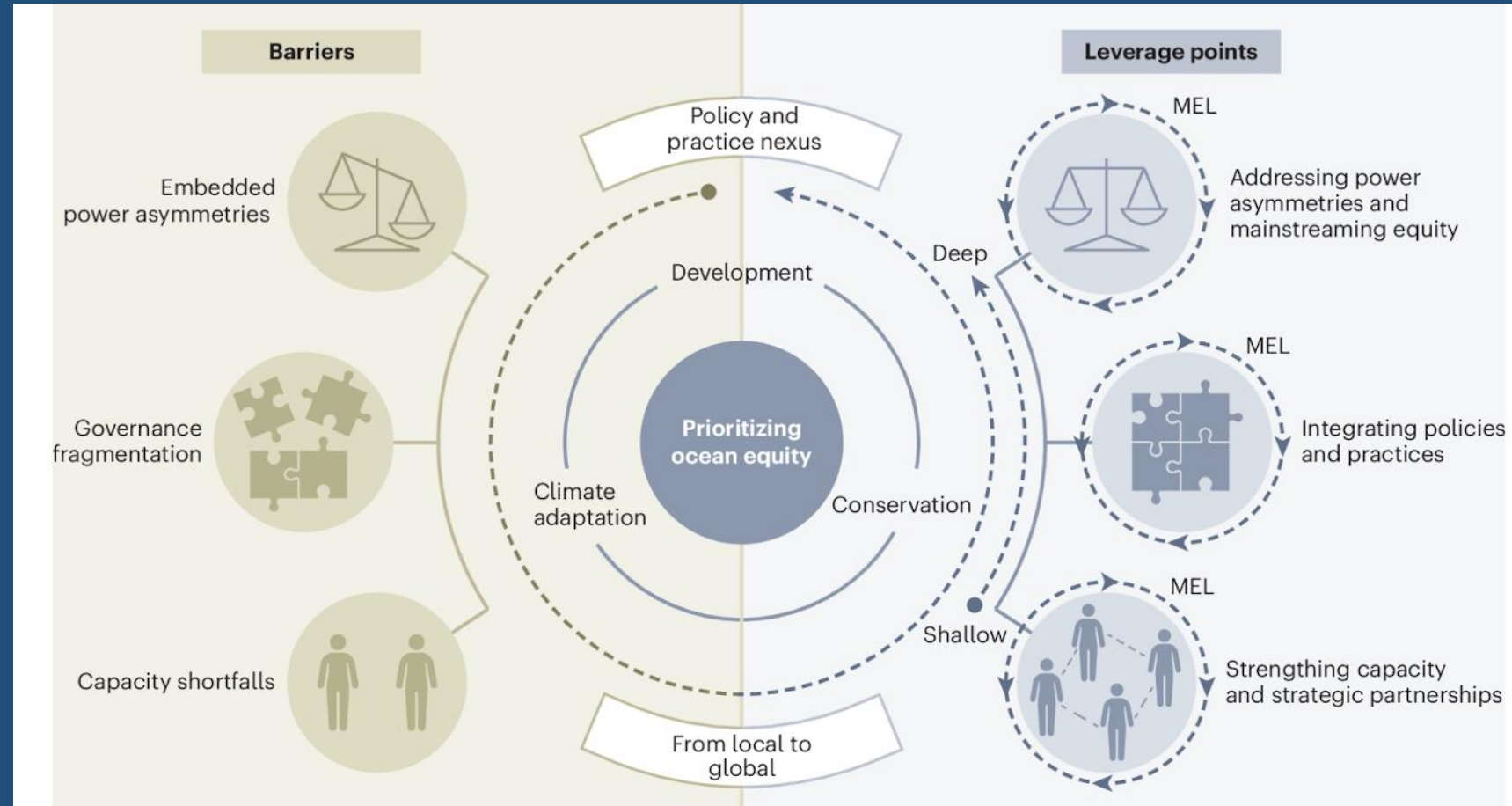
Advancing Social Justice & Building General Resilience

Strategies for Equitable Investment at Coastal Climate-Conservation-Development Nexus



Advancing ocean equity at the nexus of development, climate and conservation policy

Identify barriers and leverage points in ocean policy to advancing equity at development, climate and conservation nexus



Ocean Synthesis Lab: Transdisciplinary research

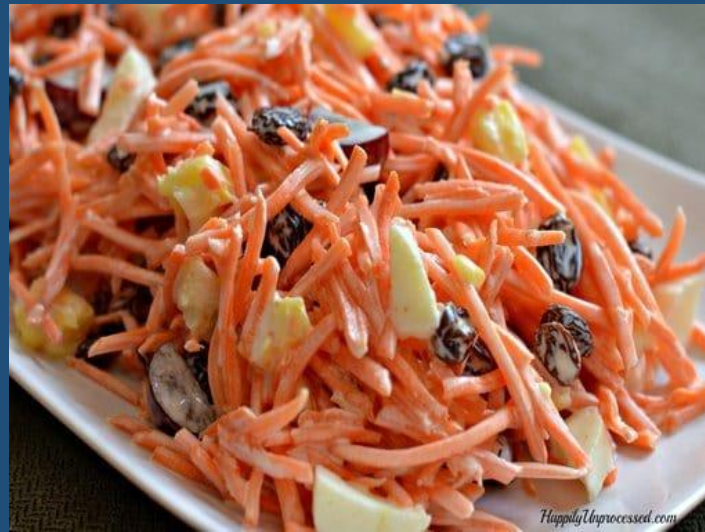


Crossdisciplinary



RecipeTin Eats

Interdisciplinary



Transdisciplinary



Foodtasia

Ocean Synthesis Lab:

Collaboration opportunities for climate and migration research

Co-developed Research: Local-global collaborative research at climate-development-conservation nexus

Data Synthesis & Analysis: social & ecological, local-global, socially disaggregated, quantitative & qualitative, etc.

Monitoring, Impact Evaluation: understanding factors shaping climate impacts, effectiveness and equity of initiatives, response to change

Evidence Informed Guidance: Co-develop evidence-based insights for practical solutions to sustainability challenges